

SIM

ANNUAL REPORT 2024





Contents

President's Letter 5

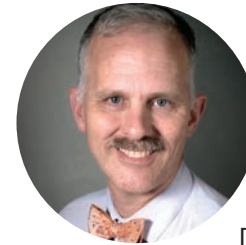
Because Jesus Said Go 6

Sent to Respond to Need, Proclaim
the Gospel, and Equip the Church 8

Breaking Down Barriers to Sending 10

Financials 12

Fueling the Future of Mission 14



President's Letter

Dear friends and supporters,

It has been an encouraging year for SIM USA. By God's grace, we have witnessed people putting their faith in Jesus in least-reached places, new missionaries being sent by churches, and financial provisions that exceeded our fundraising goals!

Reflecting on the past year, we are reminded of our rich history. The founding of SIM in 1893 by Walter Gowans, Thomas Kent, and Rowland Bingham was a courageous endeavor. Two of these pioneers, Walter and Thomas, died in their first year of service, seeing the fruit of their investment from their heavenly home.

This year, 25 saints who included SIM USA in their wills helped us exceed our fundraising goals by over a million dollars. These funds will raise up workers who will reach the nations for decades to come. Like Walter and Thomas, these saints have completed the race and now see the eternal impact of their earthly giving with new eyes.

One inspiring story from this year involves a large church in America. They sent their first candidate for long-term missions to one of our Connect events. Later, they sent four key leaders from their missions team. Now, they aim to send ten long-term missionaries every year.

Looking ahead, our strategic goals focus on expanding partnerships with diverse churches and potential missionaries. The Connect program continues to play a crucial role in identifying and preparing new workers for long-term missions.

Thank you for your continued support and prayers. Our great King, Jesus, is using us to make an everlasting difference.

Everything for His glory,

Randy Fairman, SIM USA

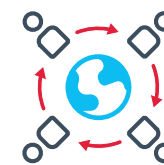
ONE "YES." 130 YEARS OF IMPACT.

SIM was founded in 1893 when Walter Gowans, Thomas Kent, and Rowland Bingham risked their lives to make Jesus known in the vast, unreached areas of sub-Saharan Africa. It was considered so dangerous that no existing mission agency would agree to send them, but they followed God's call regardless. Two of these men paid the ultimate price, but the third—though sickened and forced to leave—went on to mobilize many others. Today, this region is the global center of Christianity.

Because they said "yes," thousands of long-term cross-cultural workers have been mobilized into God's global work through SIM.



Today, through SIM USA, the American church now sends roughly 50 new workers each year to join multicultural teams serving around the world as they:



178

Workers in Proclaiming Focus Ministries

Proclaim the Gospel

Our workers make Jesus known through business ministry, education, sports ministry, church planting, evangelism, media, arts, and countless other ways. God reflects his goodness through their vocations and day-to-day lives in the community.



211

Workers in Equipping Focus Ministries

Equip the Church

We invest in local leaders and churches, equipping them through discipleship, ministries, theological, education, community, education, international schools, technical services, and church development ministries.



261

Workers in Responding Focus Ministries

Respond to Need

Our workers also respond to real needs through locally lead initiatives in medical and health ministry, community development, ministry to children, providing relief in drought, natural disasters, and many more.



HOW SIM SUPPORTS U.S. CHURCHES IN SENDING MISSIONARIES

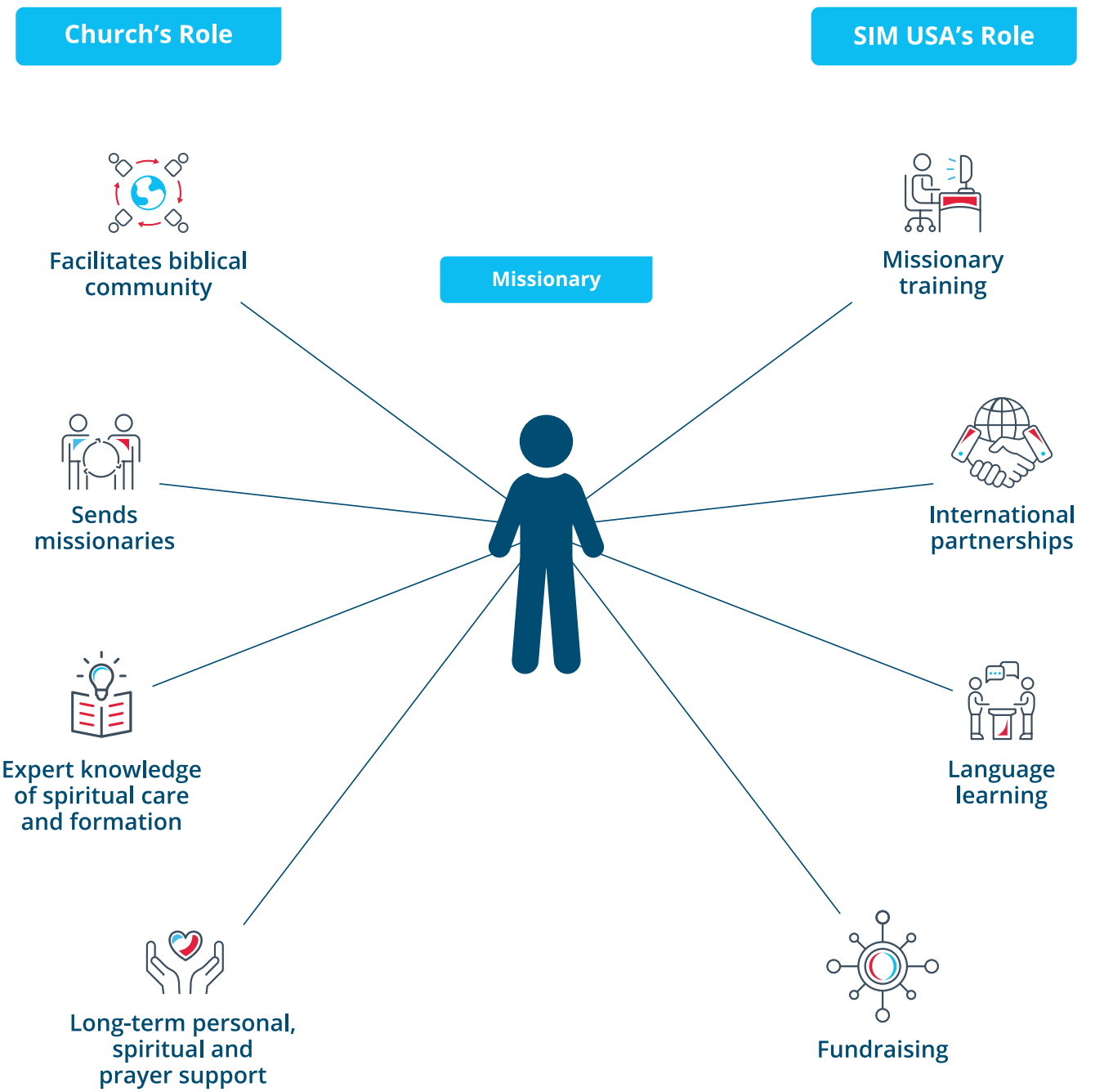


The Church's Role

Churches make and nurture disciples, helping people come to know Jesus and follow Him closely. They facilitate biblical community and spread the kingdom of God. These responsibilities include sending cross-cultural workers, but there are many areas of ministry churches must maintain.

SIM USA's Role

SIM USA has a unique level of expertise in missionary training, international partnerships, language learning, fundraising, international life and more. We come alongside churches with this expertise and practical resources to help equip them and their missionaries.



OPENING DOORS FOR DISCERNMENT

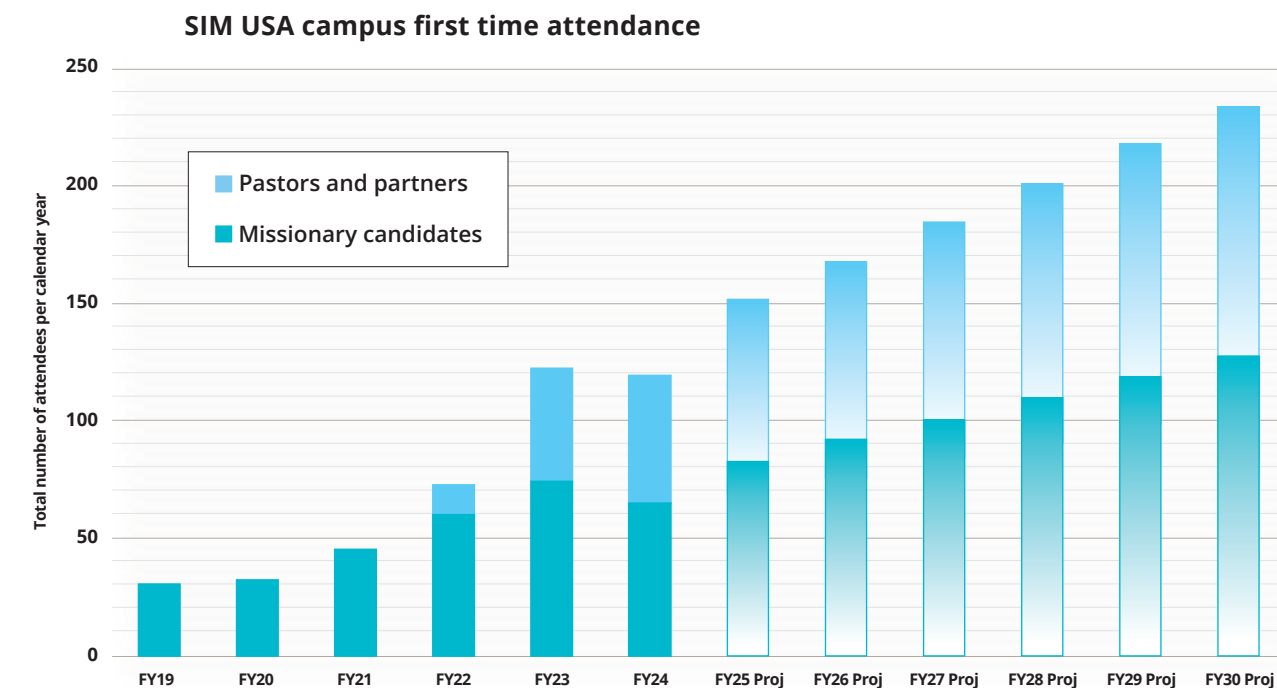
Over the last two years, SIM USA has piloted and grown our Connect event into a dynamic and highly relational discernment experience for potential workers and church pastors.

Hosted on SIM USA's beautiful campus in Charlotte, North Carolina, this three-day retreat provides:

- Interactive learning sessions with current missionaries and SIM USA staff.
- Times of worship, prayer, and reflection in community with peers on the same journey.
- Shared meals and downtime with current and former workers serving all around the world.
- Structured breakouts to explore specific mission pathways and ask hard questions.

Best of all, donors who support Send More Workers are helping provide this vital first step toward global mission for qualified attendees at no cost!

God is sending more workers through Connect!



2024 FINANCIALS

STATEMENT OF INCOME AND EXPENSE

For Fiscal Years Ending on September 30

INCOME	2022	2023	2024
Contributions	50,203,283	49,854,767	51,885,871
Rental, Sales, Other	875,260	232,687	1,161,981
Investment Income	(6,184,654)	2,907,788	6,121,980
Total Income	44,893,889	52,995,242	59,169,832
EXPENSE			
Program Services	46,877,595	46,608,719	46,223,644
Management and general	5,748,354	4,662,628	5,498,549
Fundraising	2,043,405	1,492,280	1,275,207
Total Expenses	54,669,354	52,763,627	52,997,400
Change in Net Assets	(9,775,465)	231,615	6,172,432

These are unaudited numbers. Audited statements will be posted on simusa.org after our audit firm, Capin Crouse completes their audit.

GENERAL FUND DONATIONS



Thank you!

God used your gifts in 2024 to help SIM USA partner with the American Church to send nearly 50 new workers to join multicultural teams reaching the least reached.

Your gifts make a difference by helping us recruit, prepare, and journey with Christians sent by churches:



SIM has operated by prayer since the beginning, depending on God to lead, provide, and open doors for the gospel. Your gifts have mobilized more people to pray for God's global work through SIM than ever before.



Your gifts ignite global outreach through dynamic events like Connect! In 2024, we welcomed 133 guests across five dynamic events, engaging even more potential workers. Plus, you equipped us to host and train 68 future workers at our two essential week-long training events.



Your gifts enabled us to walk alongside 56 Christians who discerned the Lord was leading them to go through SIM—assessing their training needs, connecting them with the team the Lord was leading them to, and preparing them to thrive once they arrived!



Your gifts provided personalized care and attention to workers, helping ensure their emotional wellness, prevent burnout, and promote longevity of service.

FUELING THE FUTURE OF MISSION

SIM USA believes that Jesus has called all Christians to find their role in the Great Commission—a role that may change many times over the course of a life spent with Him.

It is our heart to journey with Jesus followers here in the United States, providing ways for everyone to engage in what God is doing overseas.



PRAY

Join Pray938 and receive a daily text message featuring a real individual who is on the journey toward global mission. Commit to praying just one minute each day for these future workers.



GIVE

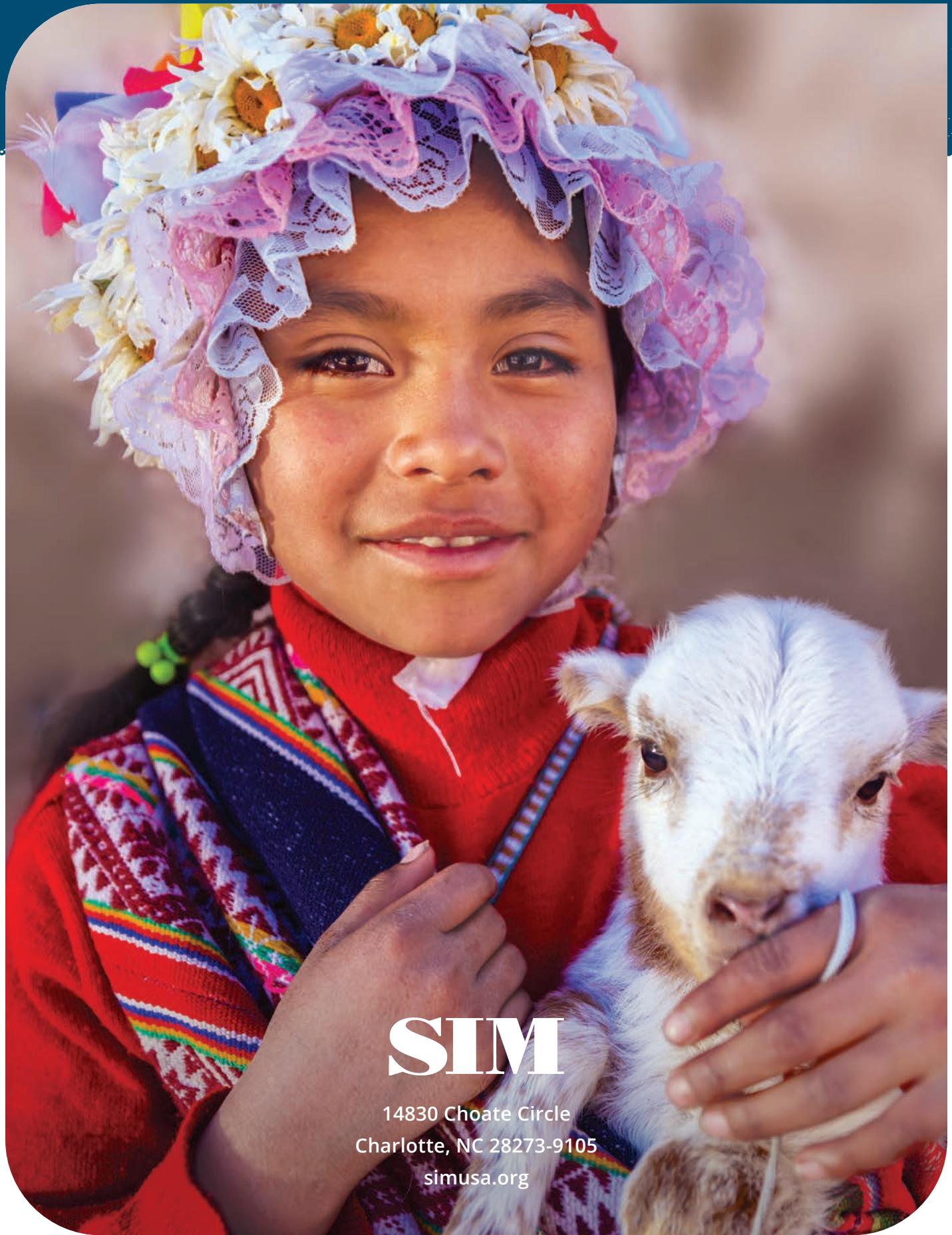
More than ever, SIM USA needs financial partners who will help us find and recruit future workers. Those already abroad remain in service supported by their personal teams of senders. Still, it will take more staff, more church outreach, and more digital engagement to mobilize tomorrow's workers in our modern world.



GO

Explore how God can use you and what you have to offer for His glory in global mission. There are more than 2,000 opportunities to use diverse skills in diverse communities across the globe. Inquire about joining SIM USA for a Connect experience and get into community with others who are also on the journey of discernment.





SIM

14830 Choate Circle
Charlotte, NC 28273-9105
simusa.org